

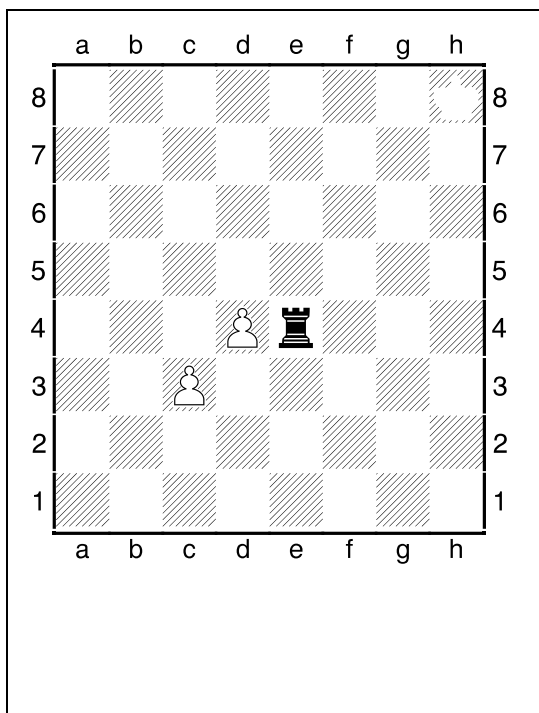
Here Black castled and put his King on b8 and Rook on c8. Why is this not allowed?

1. You cannot castle through check (d8 is covered by the Bh4)
2. The King goes to c8 and the Rook to d8 when castling queen side

What should White have done now?

White should point out that Black's move is illegal and insist that a legal move is made with the King (as it has been touched).

Alternatively, make Black put the King and Rook on the right squares after castling and then gobble the Rook with the B on h4!



In this position Black went to move the Rook on e4 but touched the pawn on d4 whilst reaching for the Rook. After saying sorry, Black then picked up the Rook whereupon White said 'touch take' and insisted that the pawn on d4 was captured with the Rook.

What should Black have done?

Get the arbiter and say that the pawn was touched accidentally when reaching for the Rook. It is a difficult decision for the arbiter but it is likely here that he would judge it an accident and allow Black to play another move because:

1. The pawn was touched first rather than the Rook (if the Rook was touched first and then the pawn, it is clear Rook takes pawn was meant to be played)
2. It was obviously such a bad move it is very unlikely that it could have been intended